

Skimmers

By Pentair Water Pool and Spa®



The Industry Standard for Performance and Reliability

For All Types of Inground and Aboveground Swimming Pools



Admiral™ Skimmers

Built tough for reliable service.

Admiral™ skimmers* offer a variety of base and throat options for nearly all plumbing and construction requirements. They are injection molded from durable, non-corrosive reinforced ABS, and feature exclusive tamper-proof lids.

Choose between flap weir or exclusive circular weir for optimal water flow and superior surface skimming action.

*Protected by US Patent 5551191

Admiral S15



Admiral S20



Standard Features

	Admiral S20	Admiral S15
Molded ABS skimmer body and throat strengthened for durability	■	■
Exclusive tamper proof lid for safety	■	■
Adjustable collar for proper fit in any installation	■	■
Available in 1 1/2" or 2" slip or thread port connections	■	■
Available with flap weir or the exclusive circular weir	■	■
Twin port connections can be plumbed in series with main drain when installed with equalizer	■	
Single port skimmer for direct connection to suction line of recirculating system		■
Reinforced PVC base	■	
Models for concrete, vinyl, and fiberglass	■	
Variety of throat lengths	■	■
Low water pump protection when plumbed to main drain	■	
Flow balancing trimmer flap supplied for use with other skimmers	■	
NSF listed as commercial skimmers	■	

Admiral Skimmer Accessories

- A wide variety of colored lids and rings are available to coordinate with colored decking materials
- Square ring seat allows the skimmer lid to fit angular deck material
- Extension collars can be added to skimmer body for raised decks
- A convenient vacuum plate attachment allows you to vacuum directly through the basket
- The Admiral™ spring valve is a tension controlled bypass valve for commercial installations requiring a valve on the bypass line
- Vinyl sealing frames with standard hole patterns for easy installation
- On Admiral S20, an equalizer assembly can control the flow between main drain and skimmer for low water protection



For a personalized touch...

We can customize skimmer deck lids with your professionally supplied artwork.

Based on a minimum quantity of 500 lids, there is a one-time \$500 set-up charge for a single design. Subsequent changes are subject to additional fees. Contact your Pentair Water Pool and Spa® Sales Representative for more information.

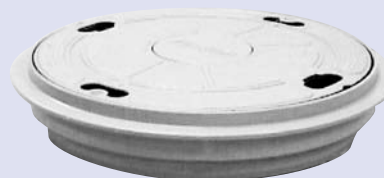


Admiral S20 with Wedge Flange

Admiral Skimmer Accessories



Square Ring Seat



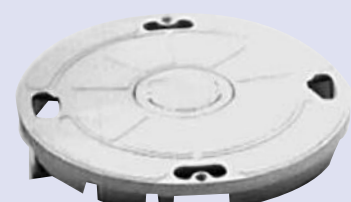
Lid with Ring Seat



Extension Collar



Vacuum Plate Attachment



Skimmer Lid

Bermuda Gunitite Skimmer



Bermuda Wide-mouth Vinyl/Fiberglass Skimmer

Bermuda™ Skimmers

Unmatched features and performance.

Bermuda™ skimmers for gunitite and vinyl-lined pools are engineered to provide the strength, performance, and durability you can count on. With all the features you look for in an efficient, dependable skimmer, they are the perfect products for keeping water surfaces free of debris.

Standard Features

Bermuda Vinyl Bermuda Gunitite

Heavy-duty, one-piece construction molded from ABS with sturdy external ribbing for superior strength	■	
ABS or PVC construction		■
Extension throats have mounting flanges and snap fit fasteners to fit steel, fiberglass, or plastic wall pools	■	
ABS deck lid with textured, non-slip surface fits tightly into deck collar for added safety	■	■
Adjustable deck collar permits precise alignment during concrete deck installation	■	
Available in 1½" thread or slip port connections	■	
Available in 1½" or 2" thread or slip port connections		■
Large capacity basket provides easy removal of accumulated debris	■	■
Extra large top opening permits easy use of vacuum plates for automatic cleaners	■	■

Bermuda Skimmer and White Goods Kits

For Vinyl Liner and Fiberglass Pools

Kit No. 561312 includes:

- 1—Vinyl liner Bermuda skimmer with 1½" threaded ports, white
- 1—Vinyl liner sump with anti-vortex plate
- 2—Vinyl liner return fittings
- 1—¾" eyeball fitting

Kit No. 561513 includes the above products, a 1" eyeball fitting, plus one 2" Bermuda vacuum plate

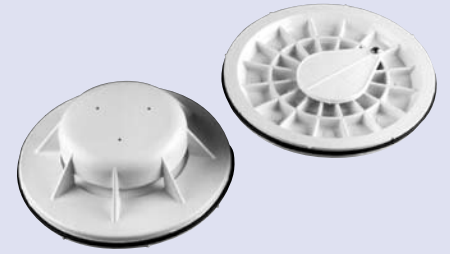


Also available for gunite pools
SkinClean™ Residential Pool Skimmer

Fiberglass body with 1½" threaded ports, ABS



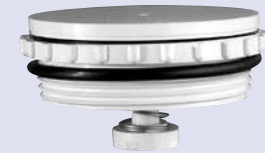
Bermuda Skimmer Accessories



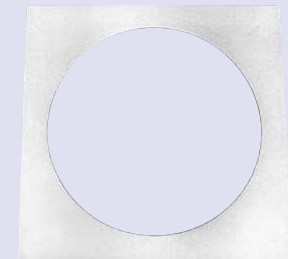
Float valve assembly



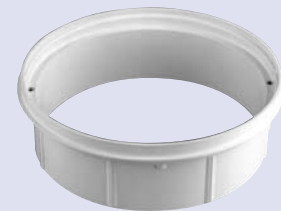
Vacuum plate/insert assembly



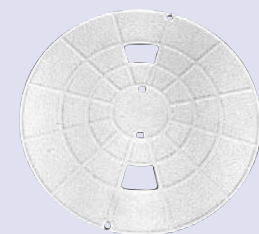
Equalizer valve assembly



Square deck ring seat



Gunite extension collar—available in white, tan, or black



Deck lid—available in white, tan, black, dark gray, and gray



FAS™ 100 Skimmers For Inground and Aboveground Pools

The FAS™ 100 is a residential, front access skimmer with a molded ABS seamless body. The basket can be removed from the top, through the lid or through the throat. The FAS 100 has a snap-in flap weir. Aboveground models include fitting kits to complete the plumbing connections to circulating hoses.

Models are also available for fiberglass and concrete pools.

HydroSkim® Skimmers For Aboveground Pools

The HydroSkim® skimmer is a seamless ABS molded skimmer designed for maximum surface skimming. All models come complete with a plumbing kit that includes fittings and hose adapters.

Features include easy basket access through throat or lid, convenient twist-lock lid, and a choice of white, black, or gray packages. Wide-mouth kits are available.

Accessory Kit No. 84900100 for FAS 100 and HydroSkim Skimmers includes:

- 1—return inlet fitting
- 1—¾" eyeball fitting
- 3—1½" MIPT X 1¼" hose adapters



HydroSkim Wide-mouth Option



Swimquip for concrete pools

Swimquip® Skimmers For Inground Pools

The low profile design of Swimquip® skimmers is ideal for new and retrofit installations. Available in white, gray, and tan, with models for both concrete and vinyl pools.



Swimquip for vinyl pools

Skimmer Lids with Thermometers

Skimmer thermometers eliminate misplacement, theft, or breakage. The face is built for strength, flexibility and weather resistance and is hermetically sealed. The outside temperature will not affect thermometer performance.

Safe and convenient, these lids fit Pentair Pool Products®, Sta-Rite®, and other popular skimmer brands. Available in white, almond, and gray to blend with any pool environment.



Six more good reasons to Partner with Pentair

You've heard the old saying, "Innovate or Perish." We take that to heart. And the innovations that boost energy-efficiency, ease operation and service, and add to the pool-owning experience just keep coming.

IntelliTouch® and EasyTouch® automation systems:

Provide push-button programming and hands-free control of all pool and spa equipment functions, as well as lighting systems. No systems are easier to operate or as technologically advanced.

FIBERworks® fiber optic lighting systems:

Offering unsurpassed system design flexibility, wireless controls, and a host of elegant and contemporary fixtures that bring water and landscapes to life at night.

SAM®, SAL®, and IntelliBrite® color-changing lights: The first and still the brightest choice in automated color-changing lights for pools and spas.

IntelliChlor® automatic chlorine generator: Advanced digital technology allows monitoring and control of chlorine output with push-button simplicity. Built-in "intelligence" is a first.

MasterTemp®, MiniMax® and ThermalFlo™ heaters and heat pumps:

With heating equipment, it's all about efficient energy use, and Pentair's lineup beats competitive systems every time.

Automatic cleaners: For inground pools, choose from the legendary Kreepy Krauly® and double-action Pool Shark® suction-side cleaners or from the Legend® series of pressure-side systems. For aboveground pools, pick E-Z Vac® or Lil Shark™ cleaners. Nobody offers you more quality choices.

At Pentair, the best of everything from a single source is more than a promise. Visit with your representative today to learn more.



Pentair Pool Products®
800.831.7133
www.pentairpool.com

Sta-Rite®
800.831.7133
www.staritepool.com

pumps / filters / heaters / heat pumps / automation / lighting / cleaners / sanitizers / maintenance products